



# The Chat

## A Super Start

Our not-so-new superintendent Richard Seda is now one of our newest neighbors. You can tell by the broad smile on his face that his renovated first-floor apartment is "just perfect" for him and his two daughters, ages 12 and 10. But, Richard is not so new to the world of building maintenance. He's spent years doing plumbing, electrical work, and carpentry before becoming the assistant super at the building



across the street from 214 at 222 RSD..

The learning curve for our loveable, historic building can be high. Figuring out how the quirky plumbing and electrical systems work, finding the valves, and locating the circuit breakers took time.

Perhaps the biggest challenge is "going above and beyond and trying to please everyone." The best thing about the job "is the people I work with,

*Continues on page 3*

## Getting To Know Our Neighborhood

### JOAN OF ARC

So how did a statue of a woman who was born in 1412, burned at the stake for heresy on May 30, 1431, beatified by the Catholic church in 1909 and canonized



as a saint in 1920, end up in our front yard? The story is an interesting, if not somewhat curious, one.

The idea for it all came from a group of New Yorkers who were keen, for whatever reason, to mark the 500th anniversary of Joan's birth. They traveled to Paris to find a sculptor. There they found Anna Hyatt (no relation to the hotel chain) who was an unknown carver of animals. She had gone to France to study and became smitten with Joan's story. After four long years of competitions, Anna won the commission for the

statue in Riverside Park but by then World War I had started and the statue became a symbol of the indomitable nature of the French, which it still is today.

Hyatt did most of her work at her family's home in Gloucester, MA, using a fire department's horse as a model and researching medieval armor at the Metropolitan Museum of Art.

The statue is the first statue made by a woman to be installed in New York City, and, for that matter, the first statue of a woman.

*Continues on page 2*

Getting To Know Our Neighborhood, cont'd from pg 1

The statue is bronze; the pedestal is made of granite and it supposedly contains stones from the dungeon in which Joan of Arc spent her final days. The pedestal bears two inscriptions: 1) Joan of Arc, born at Domremy France, January 6th, 1411; Burned at the Stake at Rouen, France, May 30th, 1431 and 2) Erected by the Joan of Arc Statue Committee in the City of New York, 1915.



Anna Hyatt Huntington in 1958

The statue became, in the decades after its construction, a symbol of Franco-American relations. It was usually included in the itinerary of visiting dignitaries and became the scene of various wreath-laying and other ceremonies, honoring whichever French person, or persons, was close at hand.

In 1920, the year Joan was canonized, 15,000 people gathered for a 21 gun salute at the statue which, reportedly caused all the pigeons in Riverside park to leave for Central Park.

Even though New York City did not exist when Joan was alive, we are sure that she enjoys living in perpetuity in our humble neighborhood.

**POMANDER WALK**

It is in our neighborhood and is the only street in Manhattan named for a stage play.

The play - Pomander Walk - a romantic comedy set on a small street in Georgian London - opened in New York in 1910, just when Thomas J. Healy was at the height of his fame as a nightclub operator. In 1920, Healy acquired a 200-year lease on a steep, irregular property at the northwest corner of 94th and Broadway, running through to the southeast corner of 95th and West End Avenue.



A 1928 theatre troupe in Pomander Walk at the Illinois Institute of Technology

Although he planned to build a 16-story hotel or commercial building, in 1921 he filed plans for Pomander Walk: 20 two-story houses facing one another across a walkway running from 94th street to 95th street, with seven

houses fronting on 94th and 95th street. Healy designed the Tudor-style residences with varying facades of brick, stucco and half-timbering. These carried over the scale but not the exact style of the original play's stage set.



The interior layout of Pomander Walk

Most of the buildings have two simple apartments - one up and one down, each with two bedrooms.

In September 1921 The New York Times described Pomander Walk as "a portion of the olden times transported to the heart of the modern world." It's Alice-in-Wonderland feel, fostered by its charming English gardens, has attracted fans like Humphrey Bogart, who lived there, and Woody Allen, who has one character in Hannah and Her Sisters wax poetic about it. Landmark status in 1982 ensures that it will be permanently Pomander Walk - a charming piece of the upper west side landscape forever.



Richard Seda, cont'd from pg 1

*"Maintenance of your appliances is the key to keeping everything running smoothly." – Richard Seda*

the tenants in the building, and the convenience of living where I work."

Although you probably won't hear blasting melodies or loud footsteps emanating from Richard's apartment, he's passionate about dancing and music. After all, Richard was a D.J. at weddings, sweet 16's, and even bar mitzvahs. He likes all kinds of music from Spanish, to heavy metal, to rock, rap, R&B. Even his daughters,

Nalaysa and Imani, get into the act on their salsa dance team (oh, and by the way, they're "straight A students!").

When he's not fixing, listening, or dancing Richard might be found drawing – he created a mural in his daughters' bedroom – or riding one of the several motorcycles he used to collect.

In the building, he spends a lot of time looking at the older air

conditioning/heating units that seem to break down more than anything else. He advises cleaning and servicing them twice a year. "Maintenance of your appliances is the key to keeping everything running smoothly." And the key to helping Richard run the building smoothly is his boss, our managing agent Lisa Gorelli.

## 214riversidedrive.com – Our Hot New Website!

*"We're taking a second look at that apartment because of the web site."*

That's what two prospective purchasers told the author of this article during an elevator ride. The author was delighted, particularly because she had not yet told them that she built the site.

Attracting prospective buyers is an unintended benefit derived from revamping the website. The true purpose of the new site is to keep us, the shareholders and other residents of the building, informed and entertained.

The new web site has a lot to offer. We now have an events calendar, a news page, a photo gallery, a links page and much more. We will

also be putting important announcements at the top of the home page, so check the site often.

We want your input and help to keep the site

[theboard@214riversidedrive.com](mailto:theboard@214riversidedrive.com). If you know of any web sites that you would like to see on the links page, please forward them to us.



interesting and informative. If you have pictures of the neighborhood, your pets, the building or anything else you would like to share on the photo galleries, please send them to us at

While we have a web designer on the board we want to keep her busy and out of trouble. So, if you have any ideas for features you would like to see on the web site please let us know.



# Featured Pet

## LUANNE

For over 14 years anyone who entered apartment 101 or 115 was greeted with a sweet "meow" and a request for a head rub from this beautiful silver Maine Coon cat. Luanne is so friendly she even touched noses with Princess, our previous Featured Pet and a (*shutter!*) **DOG**.

Luanne is man crazy. She particularly likes men who come equipped with tool boxes, equipment cases or anything else in which she can curl up. Her penchant for cases belonging to men did cause Judith (her Mom) some embarrassment. As the well known violinist Rolf Schulte fiddled away on his magnificent instrument during a rehearsal,

Luanne curled up in his violin case. She deposited a ton of hair in it, and then, just to make sure it would always be hers, she tore it to shreds. Luanne's sweetness enabled her to get very close to a difficult cat that lived in her home. Barnacle, a stray and feral cat that used to live in the closet behind our laundry room, was taken in by Judith. Barnacle adored Luanne, and only Luanne, right up until she passed away.

Luanne is now suffering from Kidney disease and might not be with us much longer. Even now, when she feels so tired, she does her best to welcome everyone into her home.



*"Luanne is man crazy."*

## IN MEMORIAM

*"Just this side of heaven is a place called Rainbow Bridge".*

[www.rainbowsbridge.com/Poem.htm](http://www.rainbowsbridge.com/Poem.htm).

Our dear little friend Gracie (Apt. 312) passed away at the end of September after a short illness.

Our hearts go out to Julie.



## GRACIE

*Do you have a pet that you would like to see featured in our Featured Pet section? Please send a picture and narrative to [theboard@214RiversideDrive.com](mailto:theboard@214RiversideDrive.com).*

*We will put the picture on the website and consider the entry for the "Featured Pet" section.*



## New Faces

**Jeff and Rebecca Soule** (Apt. 405) wondered if they could use a handcart when they moved here. After all, they were just moving from 96<sup>th</sup> Street between West End and Riverside. It almost seemed like hiring a truck would be overkill.



*Jeff & Rebecca Soule  
Apt. 405*

Jeff, who manufactures parts for OEM's, and Rebecca, who has a PhD in biology from University of North Carolina at Chapel Hill and freelances as a scientific writer and educator, fell

in love with our building and with their new river view. They also love the location of their new home. That's completely understandable because it's almost the location of their old home.

When Jeff and Rebecca want to have fun they go backpacking, tour the city on scooters and downhill ski.

**Polly Baird** (Apt. 313 Sublet) has been an Upper West Sider for much of her life. While looking for a new place to live she was enchanted by the beauty of our building and our proximity to Joan of Arc and Riverside Parks. Lewis and Kwaji also charmed Polly and helped to sway her decision in favor of moving to our lovely building.

Polly is a featured player in Broadway's *Phantom of the Opera*,

playing Meg Giry. She's delighted that we live so close to an express subway stop. Her commute to the theater is now a very short two stops.



*Polly Baird  
Apt. 313*

When Polly isn't singing and dancing in *Phantom* she enjoys walking through our parks with her adorable English Cocker Spaniel, Lexie.

## Updates

### FIDDLING ON THE ROOF

As previously reported, the June storm decimated the roof deck's walkway, and the actual deck area has been deemed unstable and unsafe. Our goal is to make the roof deck even better and stronger than it originally was. We are in the process of negotiating with the insurance company and we are accepting additional bids



from contractors for the repairs. As soon as there is more news to share we'll be sure to communicate it to you. In the meantime, please know that we are doing our best – we all miss the roof deck and want it repaired and open for business as soon as

possible. Be assured we are working towards that goal.

### MONEY MATTERS

The good news is that the fuel assessment really helped us to offset the astronomical fuel cost from last year. Thank you all for chipping in.

*Continues on page 6*



Updates, cont'd from pg 5

The less good news is that we're going to have to heat the building this year, too. Like everyone else, we're feeling the effects of inflation. Everything is more expensive than it was two years ago and even more expensive than last year. Everything!!!

The Board is discussing options to help us balance our budget. When we have numbers to work with we'll have a better idea of the measures we need to take to make sure that our operating expenses are covered.

Once we know what's needed, if anything, we'll let you know.

**.LOCAL LAW 11**  
It's really happening, really soon. Really. It's been hanging over our heads for

centuries (well, it feels that way) and within the next two weeks scaffolding will be going up.

We are currently negotiating working hours with the contractors in an effort to minimize the amount of time the work will take (and therefore minimize the amount of time we will all be inconvenienced!) And unfortunately there will be some inconvenience -- we've been told the work is quite dusty and windows and air conditioners will have to remain closed and covered up in the areas where work is being done.

We know and share in the discomfort this will cause and are therefore working with the contractors to cut down on the inconvenience as

much as possible. More information will be distributed to everyone as soon as it is available and prior to the start of work.

*It's really happening, really soon. Really.*

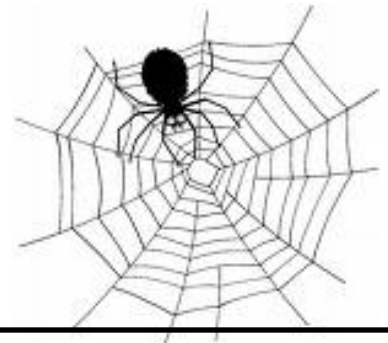


## Greening 214RSD

The 214 Board wants to help the building become more green, so we're forming a advisory committee of shareholders to find ways to make our home more environmentally friendly. We're calling it the "Green Committee." If you would like to join us in our quest to

"green up" 214 RSD, please sign up on our website [www.214RiversideDrive.com](http://www.214RiversideDrive.com) (you'll see the link at the top of the home page), email our managing agent (lgorelli@lawrenceprop.com) or slip a note with your name, apartment number, email address

and phone number under the door of apartment 715. If you choose to sign up on the website, you will need to enter a password. That password is "214treehugger" and it is not case sensitive. Once we have enough people signed up we will schedule a meeting.



# FUN STUFF

Can you find these fall fun words?

- October
- Trick
- JackOLantern
- Custume
- Witches
- Pumpkin
- Treat
- Skeleton
- Ghosts
- Goblins
- Werewolves
- BlackCat
- Party
- Apples
- Candy
- Vampire<sup>s</sup>



R			D			S		I
4		N	S	2	Y	R		C
	S	D						
			4	C				
N				Y	R			
						D	4	
D		R	Y	N	4	C		S
I		S			2			Y

**214 RSD Sudoku**

The objective is to fill the 9x9 grid so that each column, each row, and each of the nine 3x3 boxes contains the characters from "214RSDNYC" only *one* time each.

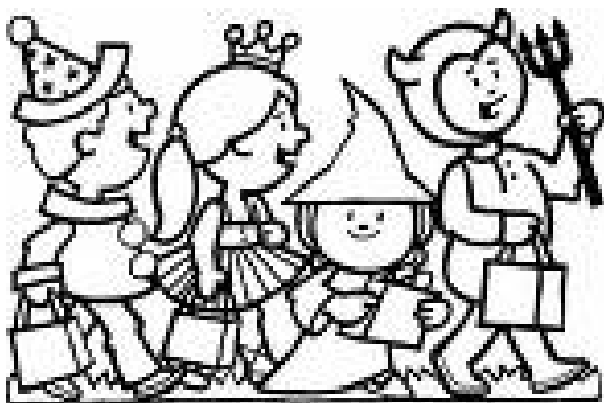
Puzzle solutions available at [214RiversideDrive.com](http://214RiversideDrive.com)

COLOR IN THE INVITATION, THEN CUT IT OUT AND HANG IT UP!



**YOU'RE INVITED**  
**TO OUR HALLOWEEN PARTY!**

**WHO: ALL CHATILLION KIDS AND THEIR GUESTS**  
**WHAT TIME: 6:45 PM - 7:30 PM**  
**WHERE: OUR LOBBY**  
**WHEN: HALLOWEEN - DUH!**





## FALL RECIPES

### Roasted Butternut Squash Soup

- 4 cup vegetable broth
- 12 oz butternut squash, peeled and cut into 1- to 1 1/2-inch cubes\*
- 1/2 large vidalia onion(s), cut into 2-inch cubes
- 1/4 small apple(s), peeled and cut into to 2-inch cubes
- 1/4 tsp table salt, or to taste
- 1/8 tsp black pepper, or to taste
- 1/8 tsp ground nutmeg, or to taste

In a large stock pot, combine broth, squash, onion and apple; cover pot and bring to a boil over high heat. Uncover pot and reduce heat to low; gently simmer until squash is very tender, about 10 minutes. □

Puree soup in pot using an immersion blender (or puree in a regular blender in batches, careful not to splatter hot liquid). Season with salt, pepper and nutmeg; serve. Yields about twelve 1/2 cup per serving.

*Recipe courtesy of weightwatchers.com, POINTS® Value: 0*

### Chocolate Chip Pumpkin Cookies

- |                                     |                                  |
|-------------------------------------|----------------------------------|
| 4 cups all-purpose flour            | 1 cup vegetable oil              |
| 2 cups sugar                        | 2 eggs                           |
| 2 teaspoons ground cinnamon         | 2 tablespoons milk               |
| 2 teaspoons baking soda             | 2 teaspoons vanilla extract      |
| 1 teaspoon salt                     | 2 cups semisweet chocolate chips |
| 1 (16 ounce) can solid pack pumpkin | 1 cup chopped walnuts            |

In a mixing bowl, combine flour, sugar, cinnamon, baking soda and salt. Add pumpkin, oil, eggs, milk and vanilla; beat on medium speed until well mixed. Stir in chocolate chips and nuts. Drop by tablespoonfuls onto greased baking sheets.

Bake at 375 degrees F for 13-14 minutes or until edges just begin to brown. Cool for 2 minutes; remove to a wire rack to cool completely.

*Recipe courtesy of allrecipes.com*

### BRAG BOARD

*\*\*\* Peter Guttman had a one-man exhibition of his photographs of the Brazilian Amazon at the United Nations in August.*

*\*\*\* Teresa Cicala won a Daytime Emmy for Outstanding Series Directing Team.*

*\*\*\* Isabella Stannard celebrated her fourth birthday on October 1<sup>st</sup>.*

### GOT SOMETHING TO BRAG ABOUT?

#### WANT TO SHARE A FAVORITE RECIPE?

SEND IT TO US FOR THE NEXT ISSUE OF THE CHAT!

Email us at [TheBoard@214RiversideDrive.com](mailto:TheBoard@214RiversideDrive.com)